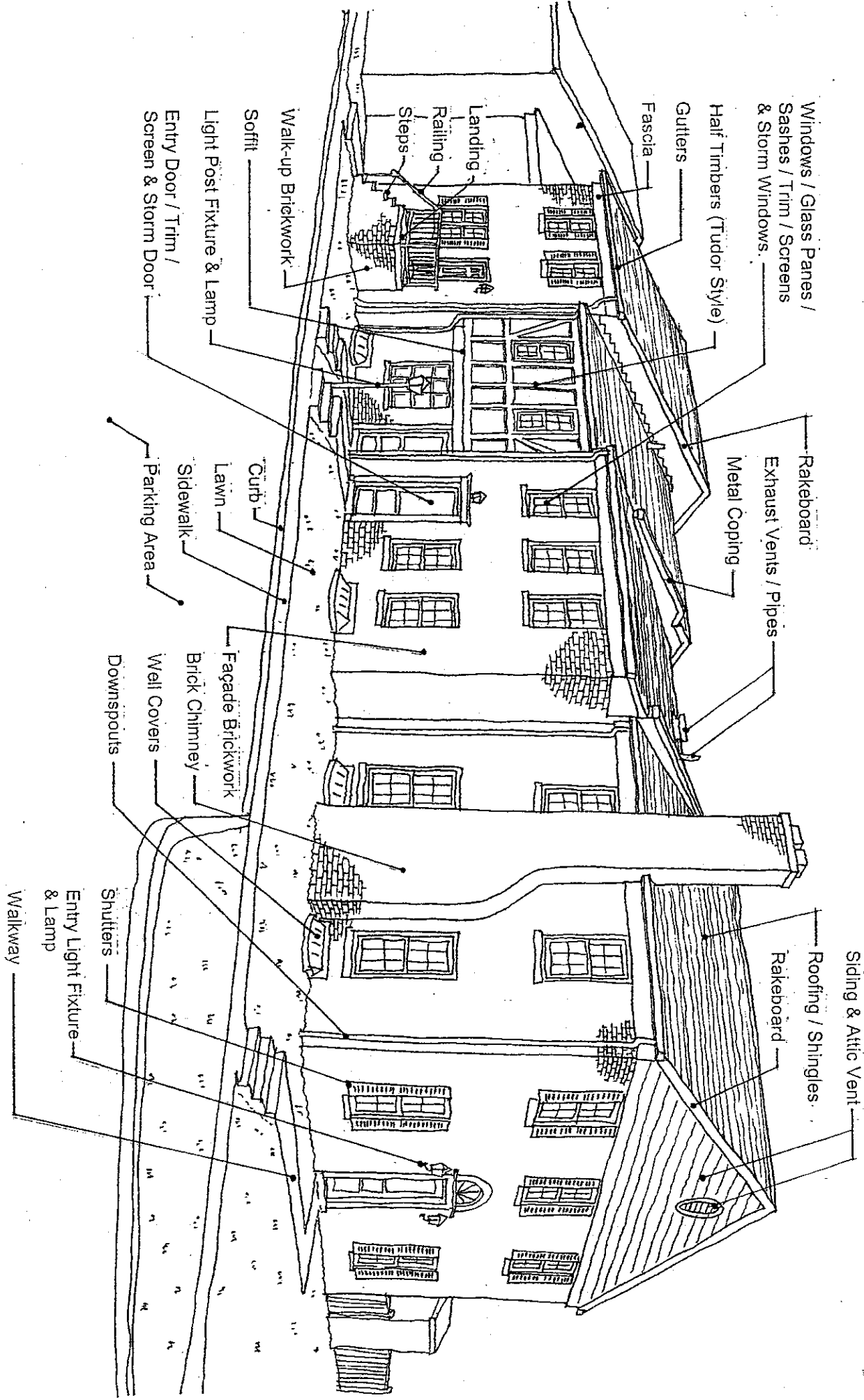


(B) Walk-up - Brick

(D) Middle - Brick & Tudor

(C) Middle - Brick

(A) End - Brick



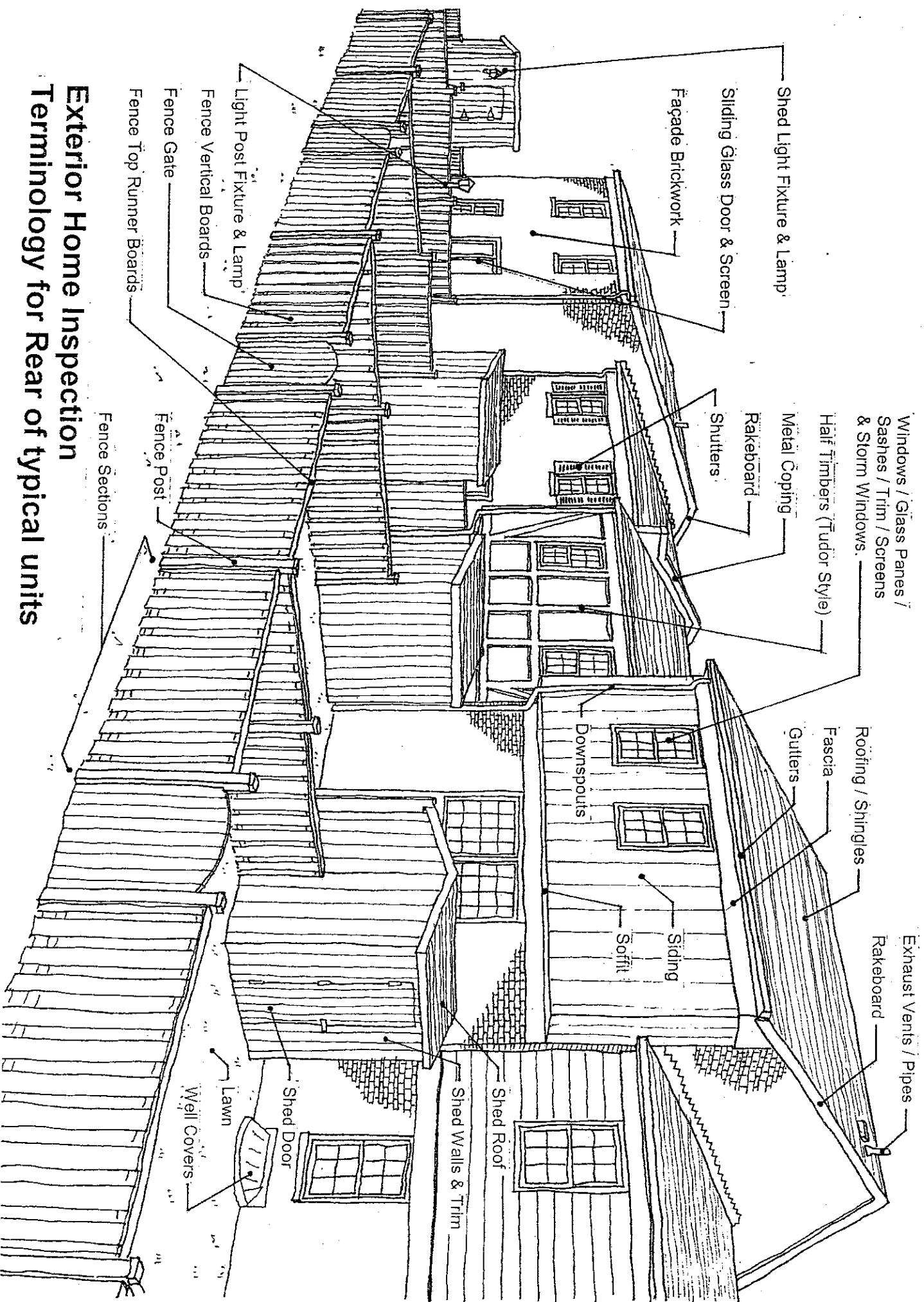
**Exterior Home Inspection Terminology for Front & End of typical units**

(A) End - Brick

(D) Middle - Brick & Tudor

(C) Middle - Brick

(B) Walk-up - Brick



Shed Light Fixture & Lamp

Sliding Glass Door & Screen

Facade Brickwork

Windows / Glass Panes / Sashes / Trim / Screens & Storm Windows

Half Timbers (Tudor Style)

Metal Coping

Rakeboard

Shutters

Roofing / Shingles

Fascia

Gutters

Exhaust Vents / Pipes

Rakeboard

Downspouts

Siding

Soffit

Shed Roof

Shed Walls & Trim

Shed Door

Lawn

Well Covers

Light Post Fixture & Lamp

Fence Vertical Boards

Fence Gate

Fence Top Runner Boards

Fence Post

Fence Sections

**Exterior Home Inspection Terminology for Rear of typical units**